

Designer's  
LIGHT BOX™



BY  Elstead  
LIGHTING



*Designer's*  
LIGHT BOX™

---

Designer's Light Box™ is a special collection of products aimed at Interior Designers, Specialist Retailers and Hospitality Suppliers. This collection features Chandeliers and Wall Lights, Bathroom and Outdoor lamps as well as portable lamps and lampshades.

Our bespoke lampshades are made in-house and feature both a large range of standard shade forms and sizes in a multitude of fabric options as well as more custom made shade production for projects.

All of these products, sold under the brands Light Box or Designer's Light Box will have selective distribution through the above listed specialist channels.

# CONTENTS

---



Interior Ranges p 4-20



Shades p 21-43



Portables p 44-63



Bathroom Lighting p 64-65



Exterior Ranges p 66-75

# PRODUCTS A-Z

---

ALBERT	20
AMELIA	46
ANGUS	46
ANYA	12 - 13
ASTRID	10
BALDWIN	64
BENNETT	64
BLYTHE	65
BOYNTON	68 - 69
CAYDEN	8 - 9
CHALK FARM	63
CHILING	58
COLBIN	16
CROSS	60
DALIAN	59
DIAN	54
DORADO	47
DREYFUS	18
ECLIPSE	45

FERRARA	61
HALKIRK	45
HARBIN	55
HARPER	19
HODGES	66 - 67
KEW	63
LAKESIDE	14 - 15
LINYI	54
LOUVIERS	52
LYNDON	73
MAJIN	56
NARBONNE	53
NICO	17
OAKLEIGH PARK	62
OXBLOOD	56
PAINSWICK	48 - 49
PAVÉ	4 - 5
PERONNE	52
PERREUX	20

PIPPIN	64
RAVINE	74 - 75
RIVERWOOD	70 - 71
RUFUS	45
SABI	44
SASHI	57
SHADES	21 - 43
SPIRIT	47
STRASBOURG	53
TAIPEI	57
TANGIER	72
TESSA	65
TONGLING	58
VAUXHALL	62
VINTNER	6 - 7
WOOD HOLLOW	11
WOODSTOCK	50 - 51
YANTAI	59

# INTERIOR RANGES



Inspired by the craftsmanship of fine jewellery, a Crystal inlay is coupled with the Polished Nickel finish and White Shantung Silk shades in each fixture of the Pavé lighting collection to add sparkle in an unexpected way. This transitional design delivers vibrant elegance to any room's design without overpowering the rest of the beautiful décor. The wall light features an Opal Etched glass shade.



FE/PAVE/P/M



FE/PAVE/F/S



FE/PAVE3



FE/PAVE1



FE/PAVE5

Code	Description	Height	Width	Min. Drop	Max. Drop	Projection	Finish	Max. Wattage
FE/PAVE1	1lt Wall Light	195mm	127mm	-	-	148mm	Polished Nickel	1 x 60W E27
FE/PAVE3	3lt Chandelier	406mm	457mm	506mm	2072mm*1	-	Polished Nickel	3 x 60W E14
FE/PAVE5	5lt Chandelier	635mm	642mm	733mm	2302mm*1	-	Polished Nickel	5 x 60W E14
FE/PAVE/F/S	2lt Flush Mount	174mm	330mm	-	-	-	Polished Nickel	2 x 60W E27
FE/PAVE/P/M	3lt Pendant	263mm	508mm	478mm	1392mm*2	-	Polished Nickel	3 x 60W E27

\*1 Supplied with 1524mm of chain. \*2 Supplied with 3 x 305mm & 1 x 152mm rods.



Models shown: FE/VINTNER5

Wine glass-shaped, Opal Etched glass shades inspired the name of the transitional Vintner collection by Feiss. The sweeping design uses smaller arms at the top and slightly larger arms below. A decorative sphere detail acts as a perch for each glass shade for an elegantly simple silhouette in a Satin Nickel finish.



FE/VINTNER3



FE/VINTNER9



FE/VINTNER5



FE/VINTNER/SF



FE/VINTNER1



FE/VINTNER/F/M  
IP44 rated

Code	Description	Height	Width	Min. Drop	Max. Drop	Projection	Finish	Max. Wattage
FE/VINTNER1	1lt Wall Light	229mm	141mm	-	-	170mm	Satin Nickel	1 x 60W E27
FE/VINTNER3	3lt Chandelier	457mm	483mm	553mm	2120mm* <sup>1</sup>	-	Satin Nickel	3 x 60W E27
FE/VINTNER5	5lt Chandelier	606mm	660mm	702mm	2268mm* <sup>1</sup>	-	Satin Nickel	5 x 60W E27
FE/VINTNER9	9lt Chandelier	792mm	817mm	888mm	3104mm* <sup>2</sup>	-	Satin Nickel	9 x 60W E27
FE/VINTNER/F/M	2lt Flush Mount	155mm	331mm	-	-	-	Satin Nickel	2 x 60W E27
FE/VINTNER/SF	3lt Semi-Flush	295mm	369mm	-	-	-	Satin Nickel	3 x 60W E27

\*<sup>1</sup> Supplied with 1524mm of chain. \*<sup>2</sup> Supplied with 2134mm of chain.



Models shown: KL/CAYDEN/ISLE & KL/CAYDEN/P/S



Cayden brings sculpture to your ceiling, enhancing your room décor by featuring a prominent box-shape, arched curves and optical crystal accents. To create a striking effect, Cayden offers a natural brass finish.



KL/CAYDEN/P/L



KL/CAYDEN/P/S



KL/CAYDEN/ISLE

Code	Description	Height	Width	Min. Drop	Max. Drop	Depth	Finish	Max. Wattage
KL/CAYDEN/P/S	4lt Small Pendant	406mm	305mm	551mm	1465mm* <sup>1</sup>	305mm	Natural Brass	4 x 60W E14
KL/CAYDEN/P/L	4lt Large Pendant	660mm	432mm	807mm	1721mm* <sup>1</sup>	432mm	Natural Brass	4 x 60W E14
KL/CAYDEN/ISLE	6lt Linear Chandelier	378mm	914mm	522mm	1437mm* <sup>2</sup>	305mm	Natural Brass	6 x 60W E14

\*<sup>1</sup> Supplied with 2 x 152mm & 2 x 305mm rods. \*<sup>2</sup> Supplied with 4 x 152mm & 4 x 305mm rods.

# ASTRID

Sleek and chic, Astrid is designed as an airy geometric beauty balanced with robust welded construction. The larger pendants have an inner light cluster, uniquely wired from the bottom, which appears to float inside the outer cage. The two-tone finish further enhances the layering effect for added depth and dimension.

**HINKLEY**  
LIGHTING



HK/ASTRID/5P



HK/ASTRID/MP



HK/ASTRID/3P

Code	Description	Height	Width	Min. Drop	Max. Drop	Finish	Max. Wattage
HK/ASTRID/5P	5lt Pendant Chandelier	877mm	711mm	968mm	3975mm* <sup>1</sup>	Metallic Matte Bronze	5 x 60W E14
HK/ASTRID/3P	3lt Pendant Chandelier	684mm	508mm	776mm	3783mm* <sup>1</sup>	Metallic Matte Bronze	3 x 60W E14
HK/ASTRID/MP	1lt Mini Pendant	254mm	305mm	451mm	1060mm* <sup>2</sup>	Metallic Matte Bronze	1 x 100W E27

\*<sup>1</sup> Supplied with 3048mm of chain. \*<sup>2</sup> Supplied with 1 x 152mm & 2 x 305mm rods.

# QUOIZEL

Wood Hollow's mission-inspired design combines rustic black framing and metal arcs coated in textured paint to create a convincing faux wood slat effect. A dark ash finish and vintage rivet accents complete this farmhouse-ready collection.

# WOOD HOLLOW



QZ/WOODHOLLOW/SF



QZ/WOODHOLLOW/5P



QZ/WOODHOLLOW/4P



QZ/WOODHOLLOW/MP

Code	Description	Height	Width	Min. Drop	Max. Drop	Finish	Max. Wattage
QZ/WOODHOLLOW/4P	4lt Chandelier	710mm	382mm	787mm	2647mm*1	Rustic Black	4 x 60W E14
QZ/WOODHOLLOW/5P	5lt Pendant	625mm	524mm	702mm	2563mm*1	Rustic Black	5 x 60W E14
QZ/WOODHOLLOW/MP	1lt Mini Pendant	305mm	229mm	416mm	1395mm*2	Rustic Black	1 x 100W E27
QZ/WOODHOLLOW/SF	4lt Semi-Flush	304mm	425mm	-	-	Rustic Black	4 x 60W E14

\*1 Supplied with 1830mm of chain. \*2 Supplied with 2 x 152mm & 2 x 305mm rods.

# ANYA

High impact glamour pairs with artisan craftsmanship to create Anya's chic silhouette. A free-form pattern of connected circles in varying sizes exude an effervescent, organic elegance. Sparkling faceted crystals are individually placed within Silver Leaf rings, radiating luxury and drama from every angle.

**HINKLEY**  
LIGHTING



HK/ANYA2



HK/ANYA/6P



HK/ANYA/MP

Code	Description	Height	Width	Min. Drop	Max. Drop	Projection	Finish	Max. Wattage
HK/ANYA2	2lt Wall Light	356mm	203mm	-	-	121mm	Silver Leaf	2 x 60W E14
HK/ANYA/6P	6lt Two Tier Pendant	800mm	406mm	923mm	3919mm*1	-	Silver Leaf	6 x 60W E14
HK/ANYA/MP	1lt Mini Pendant	311mm	203mm	562mm	1172mm*2	-	Silver Leaf	1 x 100W E27

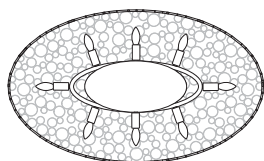
\*1 Supplied with 3048mm of chain. \*2 Supplied with 1 x 152mm & 2 x 305mm rods.



HK/ANYA/SF



HK/ANYA6



HK/ANYA/ISLE  
Top view



HK/ANYA/ISLE

Code	Description	Height	Width	Min. Drop	Max. Drop	Depth	Finish	Max. Wattage
HK/ANYA6	6lt Chandelier	419mm	610mm	538mm	3536mm*	610mm	Silver Leaf	6 x 60W E14
HK/ANYA/ISLE	10lt Linear Chandelier	338mm	1016mm	413mm	3214mm*	610mm	Silver Leaf	10 x 60W E14
HK/ANYA/SF	4lt Semi-Flush Mount	279mm	406mm	-	-	406mm	Silver Leaf	4 x 60W E14

\* Supplied with 3048mm of chain.



Models shown: QZ/LAKESIDE/P/A

# QUOIZEL

The eclectic Lakeside collection brings together three distinct designs, all sharing the same Vintage Gold finish. Their metal frames are painted in hues of silver and pale gold with black speckling. Combined with varying styles of glass accents, these products shimmer and sparkle for a beautiful statement wherever they are placed.

# LAKESIDE



QZ/LAKESIDE3



QZ/LAKESIDE4/P/A



QZ/LAKESIDE4/P/B

Code	Description	Height	Width	Min. Drop	Max. Drop	Finish	Max. Wattage
QZ/LAKESIDE3	3lt Chandelier	553mm	410mm	660mm	1870mm*2	Vintage Gold	3 x 60W E14
QZ/LAKESIDE4/P/A	4lt Pendant	813mm	381mm	913mm	3344mm*1	Vintage Gold	4 x 60W E14
QZ/LAKESIDE4/P/B	4lt Pendant	661mm	406mm	762mm	3192mm*1	Vintage Gold	4 x 60W E14

\*1 Supplied with 2438mm of chain. \*2 Supplied with 1218mm of chain.

# COLBIN

Colbin is sleek, chic and poised. Its etched opal glass and decorative knurled knobs enhance a design that easily crosses style boundaries, from traditional to modern. Colbin is IP44 rated, making it safe for use in bathrooms.

**HINKLEY**  
LIGHTING



HK/COLBIN/F/M OZ



HK/COLBIN/F/S OZ



HK/COLBIN/F/M BN



HK/COLBIN/F/S BN

Code	Description	Height	Width	Depth	Finish	Max. Wattage
HK/COLBIN/F/M BN	3lt Medium Flush Mount	146mm	414mm	414mm	Brushed Nickel	3 x 60W E27
HK/COLBIN/F/M OZ	3lt Medium Flush Mount	146mm	414mm	414mm	Oil Rubbed Bronze	3 x 60W E27
HK/COLBIN/F/S BN	2lt Small Flush Mount	128mm	318mm	318mm	Brushed Nickel	2 x 60W E27
HK/COLBIN/F/S OZ	2lt Small Flush Mount	128mm	318mm	318mm	Oil Rubbed Bronze	2 x 60W E27



The Nico pendants feature a cage profile with dramatic geometric flair. Clean lines seamlessly transition into curves, which all meet at a perfect point by using superior hand-welding techniques. The exposed bulbs are central to the design, so Edison-style LED bulbs are a perfect choice. Finished in Chrome.



FE/NICO/P/L CH



FE/NICO/P/M CH

Code	Description	Height	Width	Min. Drop	Max. Drop	Finish	Max. Wattage
FE/NICO/P/M CH	1lt Medium Pendant	603mm	353mm	698mm	2264mm*	Polished Chrome	1 x 60W E27
FE/NICO/P/L CH	1lt Large Pendant	813mm	489mm	908mm	2464mm*	Polished Chrome	1 x 60W E27

\* Supplied with 1524mm of chain.

# DREYFUS

The Dreyfus semi-flush by Kichler has a clean, modern silhouette with a show stopping optical crystal accent, which can be removed for lower ceilings. Available in Classic Pewter or Olde Bronze.

KICHLER



KL/DREYFUS/SFCLP

Crystal accent  
is removable for  
lower ceilings



KL/DREYFUS/SF OZ  
shown without crystal accent

Code	Description	Height	Width	Depth	Finish	Max. Wattage
KL/DREYFUS/SFCLP	3lt Semi-Flush	310mm (245mm without crystal)	420mm	420mm	Classic Pewter	3 x 60W E27
KL/DREYFUS/SFOZ	3lt Semi-Flush	310mm (245mm without crystal)	420mm	420mm	Olde Bronze	3 x 60W E27



HK/HARPER/SFM HB



HK/HARPER/SFS HB



HK/HARPER/SFM CM



HK/HARPER/SFS CM

Code	Description	Height	Width	Depth	Finish	Max. Wattage
HK/HARPER/SFM CM	3lt Medium Semi-Flush	253mm	456mm	456mm	Polished Chrome	3 x 60W E27
HK/HARPER/SFM HB	3lt Medium Semi-Flush	253mm	456mm	456mm	Heritage Brass	3 x 60W E27
HK/HARPER/SFS CM	3lt Small Semi-flush	253mm	366mm	366mm	Polished Chrome	3 x 60W E27
HK/HARPER/SFS HB	3lt Small Semi-flush	253mm	366mm	366mm	Heritage Brass	3 x 60W E27

# ALBERT & PERREUX

The Albert is a four light, elegantly arched, open cage pendant that is finished in Polished Chrome. The Perreux is a smaller three light, simple square framed, open cage pendant available in a black painted finish. Both are ideal for entrance halls and high ceiling corridors.



DL/ALBERT4



DL/PERREUX3

Code	Description	Height	Width	Depth	Finish	Max. Wattage
DL/ALBERT4	4lt Pendant	700mm	350mm	350mm	Polished Chrome	4 x 60W E14
DL/PERREUX3	3lt Pendant	460mm	230mm	230mm	Black	3 x 60W E14



# SHADES BY *Designer's* LIGHT BOX™

Beautiful hand crafted shades can bring table and floor lamps, as well as wall and ceiling fittings alive with vibrant colours or classic pleated shades.

In the spring of 2018, Elstead Lighting Ltd developed the Designer's Light Box brand, which focuses on designers and specialist retailers. Supporting this, we also acquired Crimway Lighting to bring the manufacture of shades in-house. We pledge to maintain the tradition of hand-crafted shade making in the UK. This involves continuing with the facility and team based near Silverstone to carry on the bespoke shade service, as well as develop a larger mass produced shade making facility at the head office in Alton, Hampshire.

With acquiring this great heritage in shade making, we are delighted to offer a comprehensive collection of hundreds of shape and size options, in more than 250 beautifully coloured fabrics. Combined with the metalwork skills already established in the Elstead factory, we are dedicated to developing a bigger and better bespoke shade framing service for larger home and hospitality products over the coming months.

# HOW TO SPECIFY A LAMPSHADE IN 8 EASY STEPS

## 1 CHOOSE THE STYLE / SHAPE

The choice of shade size is a very subjective and personal choice. Generally, a standard table lamp will use a shade width that matches the height of the base below. But some people prefer long and linear shades if they have a large space to fill and some people like to under-shade to fit in a limited space, therefore may go with the same width for the base and shade.

When replacing an old shade we would require measurements including the diameter of the shade rings at the base and top of the shade as well as the length of the slope or vertical which the material creates.

Pleated shades are known as soft shades and all others are typically hard shades (fabric mounted onto a laminate backing).



## 2 CHOOSE THE SIZE NEEDED

Shades typically increase in 2" increments and are measured at the widest width (usually the base). Shade making is still traditionally measured in Imperial inches but please see our table for Metric conversions.

Imperial	Metric
8"	20 cm
10"	25 cm
12"	30 cm
14"	35 cm
16"	41 cm
18"	46 cm
20"	51 cm
22"	56 cm

## 3 CHOOSE THE PURPOSE

It is important to specify if the shade is intended to be used for a Ceiling Pendant or for a Table/Floor Lamp, so that the correct gimble can be used.



## SOFT LINED SHADES

The classic soft tall empire shade can be crafted with a variety of pleat options including the very popular box pleat or pencil pleat (sometimes known as a fine or knife pleat). Our standard shades are produced in 100% cotton fabric with an ivory acetate taffeta lining. All shapes and sizes are available in the Ivory (off-white) or Oyster colour.

NB. All soft shades 12" and above are made for shade carriers.

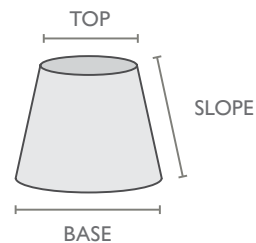


### BOX PLEAT

Shown in colour ref: DL/C IVORY

### SOFT TALL EMPIRE - BOX PLEAT

Code	Size	Shade carrier supplied	BASE	TOP	SLOPE
DL/STE8/BP	8"	N/A	20 cm	13 cm	16 cm
DL/STE10/BP	10"	N/A	25 cm	15 cm	19 cm
DL/STE12/BP	12"	5"	30 cm	17 cm	21 cm
DL/STE14/BP	14"	6"	35 cm	20 cm	25 cm
DL/STE16/BP	16"	7"	41 cm	23 cm	28 cm
DL/STE18/BP	18"	8"	46 cm	25 cm	31 cm
DL/STE20/BP	20"	9"	51 cm	28 cm	36 cm
DL/STE22/BP	22"	10"	56 cm	31 cm	38 cm



### PENCIL PLEAT

Shown in colour ref: DL/C OYSTER

### SOFT TALL EMPIRE - PENCIL PLEAT

Code	Size	Shade carrier supplied	BASE	TOP	SLOPE
DL/STE8/PP	8"	N/A	20 cm	13 cm	16 cm
DL/STE10/PP	10"	N/A	25 cm	15 cm	19 cm
DL/STE12/PP	12"	5"	30 cm	17 cm	21 cm
DL/STE14/PP	14"	6"	35 cm	20 cm	25 cm
DL/STE16/PP	16"	7"	41 cm	23 cm	28 cm
DL/STE18/PP	18"	8"	46 cm	25 cm	31 cm
DL/STE20/PP	20"	9"	51 cm	28 cm	36 cm
DL/STE22/PP	22"	10"	56 cm	31 cm	38 cm

## SPECIAL ORDER PLEATED SHADES

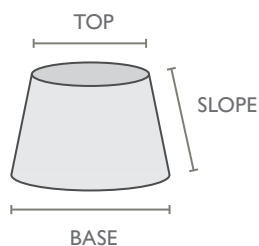
You can order any of these pleated shades in Silk fabric.

**TWO-TONE SILKS** - For boxed pleats only you can choose to have two colours of silks eg. Black silk box pleats over a gold lining. You may choose to have a different colour silk lining to the colour of the box or pencil pleat outer shade – the customisation options are left to your creativity.

**SPECIALIST PLEATS** - For our regular cotton pleated shades you could upgrade these to a pinch pleat using the same or contrasting thread and why not add a co-ordinating trim to customise your shade. (see page 42 for trim options). Mushroom pleats are also available as special request.

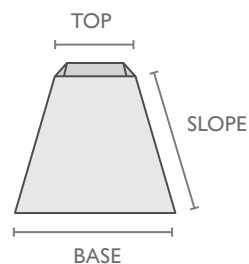
Send your enquiries to [shades@elsteadlighting.com](mailto:shades@elsteadlighting.com)

## LAMINATED SHALLOW EMPIRE



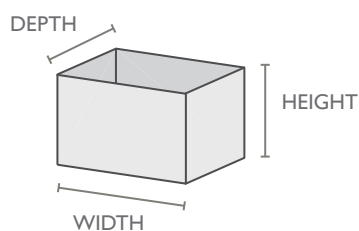
Code	Size	BASE	TOP	SLOPE
DL/LSE8	8"	20 cm	15 cm	13 cm
DL/LSE10	10"	25 cm	19 cm	16 cm
DL/LSE12	12"	30 cm	21 cm	18 cm
DL/LSE14	14"	35 cm	23 cm	21 cm
DL/LSE16	16"	41 cm	25 cm	23 cm
DL/LSE18	18"	46 cm	28 cm	26 cm
DL/LSE20	20"	51 cm	32 cm	29 cm
DL/LSE22	22"	56 cm	34 cm	32 cm

## LAMINATED TAPERED SQUARE



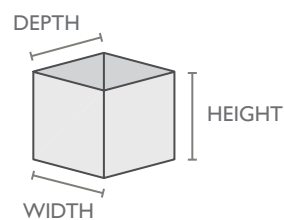
Code	Size	BASE	TOP	SLOPE
DL/LTSQ10	10"	25 cm	12 cm	23 cm
DL/LTSQ12	12"	30 cm	15 cm	28 cm
DL/LTSQ14	14"	35 cm	18 cm	30 cm
DL/LTSQ16	16"	41 cm	20 cm	36 cm
DL/LTSQ18	18"	46 cm	25 cm	40 cm

## LAMINATED RECTANGLE



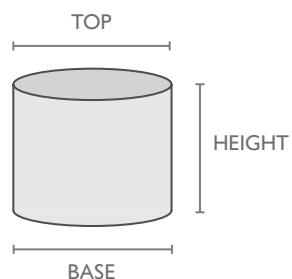
Code	Size	WIDTH	DEPTH	HEIGHT
DL/LREC8	8"	20 cm	12 cm	14 cm
DL/LREC10	10"	25 cm	15 cm	18 cm
DL/LREC12	12"	30 cm	18 cm	20 cm
DL/LREC14	14"	35 cm	20 cm	23 cm
DL/LREC16	16"	41 cm	24 cm	25 cm

## LAMINATED SQUARE



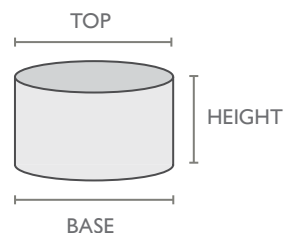
Code	Size	WIDTH	DEPTH	HEIGHT
DL/LSQ8	8"	20 cm	20 cm	17 cm
DL/LSQ10	10"	25 cm	25 cm	20 cm
DL/LSQ12	12"	30 cm	30 cm	25 cm
DL/LSQ14	14"	35 cm	35 cm	30 cm
DL/LSQ16	16"	41 cm	40 cm	30 cm
DL/LSQ18	18"	46 cm	45 cm	30 cm

## LAMINATED DRUM



Code	Size	BASE	TOP	HEIGHT
DL/LD8	8"	20 cm	20 cm	16 cm
DL/LD10	10"	25 cm	25 cm	18 cm
DL/LD12	12"	30 cm	30 cm	20 cm
DL/LD14	14"	35 cm	35 cm	23 cm
DL/LD16	16"	41 cm	40 cm	25 cm
DL/LD18	18"	46 cm	45 cm	27 cm
DL/LD20	20"	51 cm	50 cm	30 cm

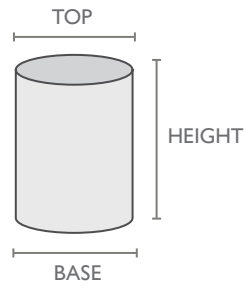
## LAMINATED SHALLOW DRUM



Code	Size	BASE	TOP	HEIGHT
DL/LSD10	10"	25 cm	25 cm	16.5 cm
DL/LSD12	12"	30 cm	30 cm	17 cm
DL/LSD14	14"	35 cm	35 cm	19 cm
DL/LSD16	16"	41 cm	40 cm	20 cm
DL/LSD18	18"	46 cm	45 cm	21 cm
DL/LSD20	20"	51 cm	20 cm	22.5 cm

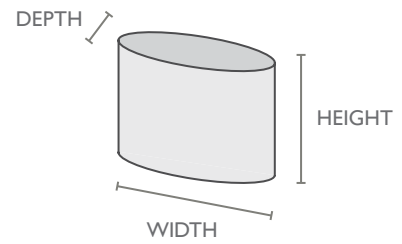


## LAMINATED TALL DRUM



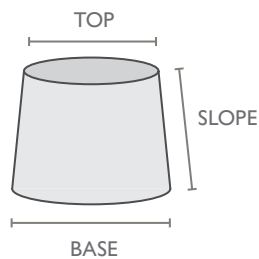
Code	Size	BASE	TOP	HEIGHT
DL/LTALLD8	8"	20 cm	20 cm	30 cm
DL/LTALLD10	10"	25 cm	25 cm	35 cm
DL/LTALLD12	12"	30 cm	30 cm	40 cm
DL/LTALLD14	14"	35 cm	35 cm	45 cm
DL/LTALLD16	16"	41 cm	40 cm	50 cm
DL/LTALLD18	18"	46 cm	45 cm	55 cm
DL/LTALLD20	20"	51 cm	20 cm	60 cm

## LAMINATED OVAL



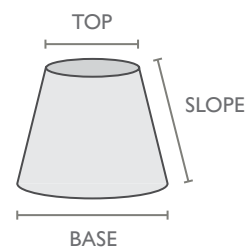
Code	Size	WIDTH	DEPTH	HEIGHT
DL/LOVAL10	10"	25 cm	16 cm	18 cm
DL/LOVAL12	12"	30 cm	20 cm	20 cm
DL/LOVAL14	14"	35 cm	23 cm	24 cm
DL/LOVAL16	16"	41 cm	27 cm	25 cm
DL/LOVAL18	18"	46 cm	29 cm	28 cm

## LAMINATED TAPERED DRUM



Code	Size	BASE	TOP	SLOPE
DL/LTD10	10"	25 cm	20 cm	18 cm
DL/LTD12	12"	30 cm	25 cm	21 cm
DL/LTD14	14"	35 cm	30 cm	23 cm
DL/LTD16	16"	41 cm	35 cm	26 cm
DL/LTD18	18"	46 cm	40 cm	30.5 cm
DL/LTD20	20"	51 cm	45 cm	32 cm

## LAMINATED TALL EMPIRE



Code	Size	BASE	TOP	SLOPE
DL/LTE8	8"	20 cm	12 cm	16 cm
DL/LTE10	10"	25 cm	13 cm	19 cm
DL/LTE12	12"	30 cm	16 cm	22 cm
DL/LTE14	14"	35 cm	18 cm	23 cm
DL/LTE16	16"	41 cm	20 cm	26 cm
DL/LTE18	18"	46 cm	23 cm	28 cm
DL/LTE20	20"	51 cm	26 cm	31 cm
DL/LTE22	22"	56 cm	28 cm	36 cm



# 4

## CHOOSE THE GIMBLE

The Gimble is the hanging or support frame inside of the lampshade. Our standard shades are supplied with a 42mm holed gimble, suiting E27 sized lamp-holders. Each gimble comes with a reducer ring which can be used with the Bayonet cap (B22) format lamp-holders. The standard Pendant or Table/Floor Lamp Gimble will be selected once the purpose is identified, but there are additional options available on special request.

### SPECIAL ORDER GIMBLE OPTIONS

A. Reversible Gimble (which can be converted from a Table Lamp style to a Ceiling Pendant style by a simple click and move mechanism).

B. Harp and Finial (typically USA styled Table/Floor Lamps that have a finial to secure the Gimble).

C. Duplex Fittings are used in tandem with Shade Carriers which are available in 6 height sizes. They are typically used on traditional shades so that you can choose the amount of stem that you show at the top of your vase or statuette. **NB. Soft pleated shades (between 12-22") come supplied with the Duplex type arrangement as standard.** We have a range of shade carriers that start at 4 inches up to 9 inches. All are made for standard E27 lamp holders, but again, you will be issued with shade reducers if you require them for an older light that has an E14 or bayonet cap (B22) lamp holder.



Shade Carriers

Code	Size
SHADE CARRIER 4	4"
SHADE CARRIER 5	5"
SHADE CARRIER 6	6"
SHADE CARRIER 7	7"
SHADE CARRIER 8	8"
SHADE CARRIER 9	9"

D. CANDLE CLIP SHADES - You can request 5 inch shades to be made for your wall lights or chandeliers. These can be fitted with a candle bulb clip at the top to sit over the E14 bulbs.



Standard Hanging Gimble



Reversible Gimble Pendant



Reversible Gimble Table Lamp



Harp and Finial



Duplex



Candle Clip Shade

---

## 5 CHOOSE THE FABRIC

Elstead bespoke shades can now be made with a choice of 250 fabrics that are held in stock.

From our Plains Book you can choose from luxury silks, satins and velvets as well as more affordable faux silks, textured satins, linens and polycottons. There are many beautiful vibrant colours and textures to bring accent colours into your interior design schemes or simple more traditional colours to blend into your room.

The new collection in our Patterns Book offers subtle self patterns in a variety of colours, traditional florals, country prints, geometric designs as well as a fun collection of 18 shade materials suitable for children's rooms.



# SILKS

This premium fine fabric is made of 100% Indian Douppion Silk and features natural slubs in the weave. These 32 stock colours are perfect for hard or soft pleated shades.



Ivory (E)  
DL-010PLN009



Black (E)  
DL-010PLN010



Apricot (E)  
DL-010PLN016



Burgundy (E)  
DL-010PLN029



Burnt Orange (E)  
DL-010PLN018



Camel (E)  
DL-010PLN002



Chocolate (E)  
DL-010PLN031



Cornflower (E)  
DL-010PLN014



Evergreen (E)  
DL-010PLN020



Feather (E)  
DL-010PLN017



Flame (E)  
DL-010PLN032



Magenta (E)  
DL-010PLN012



Orchid (E)  
DL-010PLN019



Peacock (E)  
DL-010PLN005



Pebble (E)  
DL-010PLN006



Prune (E)  
DL-010PLN028



Putty (E)  
DL-010PLN015



Silver (E)  
DL-010PLN003



Star (E)  
DL-010PLN023



Turquoise (E)  
DL-010PLN021



Twilight (E)  
DL-010PLN008



Willow (E)  
DL-010PLN026



Wine (E)  
DL-010PLN030



Banana (E)  
DL-010PLN007



Berry (E)  
DL-010PLN027



Dove Grey (E)  
DL-010PLN001



Insignia (E)  
DL-010PLN022



Kiwi (E)  
DL-010PLN025



Melba (E)  
DL-010PLN011



Moss (E)  
DL-010PLN024



Gunmetal (E)  
DL-010PLN004



White (E)  
DL-010PLN013

# FAUX-SILKS

Our faux silk collection is made of 100% polyester but still includes a slub in the weave. These 38 stock colours are perfect for hard or soft pleated shades.



**Black (B)**  
DL-020PLN044



**Light Ivory (B)**  
DL-020PLN034



**Origami (B)**  
DL-020PLN033



**Eider Down (B)**  
DL-020PLN035



**Coconut (B)**  
DL-020PLN036



**Scallop (B)**  
DL-020PLN037



**Reindeer (B)**  
DL-020PLN038



**Irish Cream (B)**  
DL-020PLN039



**Loaf (B)**  
DL-020PLN046



**Grapefruit (B)**  
DL-020PLN045



**Celandine (B)**  
DL-020PLN049



**Sour Green (B)**  
DL-020PLN048



**Pesto (B)**  
DL-020PLN047



**Botanic (B)**  
DL-020PLN051



**Surf Spray (B)**  
DL-020PLN053



**Shale Green (B)**  
DL-020PLN052



**Chateau (B)**  
DL-020PLN050



**Liberty (B)**  
DL-020PLN054



**Voyage (B)**  
DL-020PLN055



**Breton (B)**  
DL-020PLN056



**Navy (B)**  
DL-020PLN057



**Hepplewhite (B)**  
DL-020PLN040



**Titanium (B)**  
DL-020PLN041



**Whale (B)**  
DL-020PLN042



**Larkspur (B)**  
DL-020PLN043



**Bloom (B)**  
DL-020PLN063



**Calla Lily (B)**  
DL-020PLN064



**Love (B)**  
DL-020PLN062



**Cardinal (B)**  
DL-020PLN061



**Medieval (B)**  
DL-020PLN060



**Clementine (B)**  
DL-020PLN059



**Pumpkin (B)**  
DL-020PLN058



**Aubergine (A)**  
DL-030PLN065



**Ivory (A)**  
DL-030PLN067



**Olive (A)**  
DL-030PLN066



**Mint (B)**  
DL-040PLN070



**Bone (B)**  
DL-040PLN069



**Dove (B)**  
DL-040PLN068

# SATIN SMOOTH

This sophisticated smooth satin weave brings luxury into your room and is available in 17 fabulous colour options. Consider upgrading your shade with one of our metallic linings.



Off White (D)  
DL-050PLN071



Green Ochre (D)  
DL-050PLN087



Champagne (D)  
DL-050PLN080



Aqua (D)  
DL-050PLN077



Orange (D)  
DL-050PLN074



Black (D)  
DL-050PLN085



Heather (D)  
DL-050PLN073



Duckegg Blue (D)  
DL-050PLN076



Sage (D)  
DL-050PLN078



Silver (D)  
DL-050PLN083



Chocolate (D)  
DL-050PLN082



Slate (D)  
DL-050PLN084



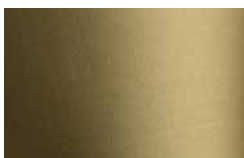
Dark Khaki (D)  
DL-050PLN086



Mocha (D)  
DL-050PLN081



Cream (D)  
DL-050PLN072



Khaki Gold (D)  
DL-050PLN079



Red (D)  
DL-050PLN075

# SATIN TEXTURED

Choose from one of our 17 beautiful stock colours in this textured satin weave collection. Enquire about the other colour options available on special order.



Aubergine (C)  
DL-060PLN088



Black (C)  
DL-060PLN104



Champagne (C)  
DL-060PLN092



Dove (C)  
DL-060PLN090



Flint (C)  
DL-060PLN096



Fog (C)  
DL-060PLN089



Fuchsia (C)  
DL-060PLN094



Gold (C)  
DL-060PLN103



Indigo (C)  
DL-060PLN102



Mulberry (C)  
DL-060PLN095



Pearl (C)  
DL-060PLN091



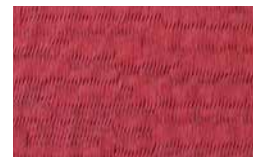
Pistachio (C)  
DL-060PLN100



Rose (C)  
DL-060PLN093



Rust (C)  
DL-060PLN098



Scarlet (C)  
DL-060PLN097



Teal (C)  
DL-060PLN101



Zest (C)  
DL-060PLN099

# VELVET

Once the chosen fabric of royalty and nobleman, velvet is a plush and luxurious weave which we offer in 9 rich colour tones.



Cremisi (C)  
DL-070PLN111



Bruno (C)  
DL-070PLN112



Grigio (C)  
DL-070PLN113



Rosa (C)  
DL-070PLN106



Verde (C)  
DL-070PLN107



Celeste (C)  
DL-070PLN108



Violetto (C)  
DL-070PLN109



Vino (C)  
DL-070PLN105



Orizzonte (C)  
DL-070PLN110

# DISTRESSED VELVET

For a more retro feel, select from this range of 9 distressed velvet fabrics.



Black (B)  
DL-080PLN115



Claret (B)  
DL-080PLN116



Duckegg (B)  
DL-080PLN117



Gold (B)  
DL-080PLN118



Grape (B)  
DL-080PLN119



Navy (B)  
DL-070PLN120



Olive (B)  
DL-080PLN121



Pewter (B)  
DL-080PLN122



Terracotta (B)  
DL-080PLN114



# SOFT TEXTURE

This beautiful soft textured fabric is available in 4 colour options and is ideal for a cosy cottage snug.



Cherry (C)  
DL-040PLN123



Dew (C)  
DL-040PLN124



Lagoon (C)  
DL-040PLN125

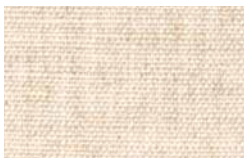


Thistle (C)  
DL-040PLN126



# LINEN

Linen has a broader weave which allows more light to come through the shade. Choose from these 9 muted tones of Linen for a simple country or coastal look.



Natural Hessian (C)  
DL-030PLN127



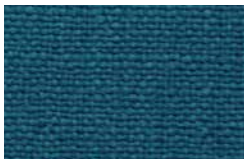
Grey (C)  
DL-050PLN131



Oatmeal (C)  
DL-050PLN132



Midnight Blue (C)  
DL-050PLN133



Mermaid (C)  
DL-080PLN128



Orchid (C)  
DL-080PLN129



Whisper (C)  
DL-080PLN130



# POLYCOTTONS

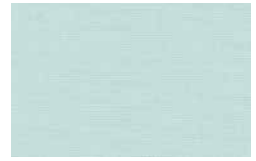
Our polycotton collection has many soft elegant colours and is suitable to make hard or soft pleated shades.



Beige (A)  
DL-050PLN140



Maroon (A)  
DL-050PLN150



Peppermint Green (A)  
DL-050PLN147



Mid Blue (A)  
DL-050PLN145



Dark Heather (A)  
DL-050PLN143



Light Heather (A)  
DL-050PLN142



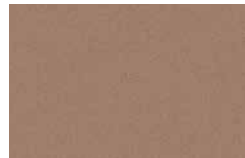
Deep Purple (A)  
DL-050PLN144



Sage Green (A)  
DL-050PLN148



Baby Blue (A)  
DL-050PLN146



Stone (A)  
DL-050PLN139



Light Grey (A)  
DL-050PLN138



Mid Grey (A)  
DL-050PLN137



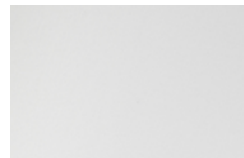
Burnt Orange (A)  
DL-050PLN149



Dark Brown (A)  
DL-050PLN141



Black (A)  
DL-090PLN135



White (A)  
DL-090PLN136



Ivory (A)  
DL-090PLN134

# HERRINGBONE

Choose from our selection of traditional fine herringbone weave fabrics to add class to any country interior.



Malabar Cocoa  
DL-040PAT079 (C)



Malabar Pine  
DL-040PAT077 (C)



Malabar Shadow  
DL-040PAT080 (C)



Malabar Taupe  
DL-040PAT078 (C)



Malabar Thistle  
DL-040PAT081 (C)



# FLORAL PATTERNS

This beautiful collection of contemporary florals on a grey background is available in a teal, ochre and silver design.



Kado Haru (Teal)  
DL-070PAT044 (C)



Kado Natsu (Ochre)  
DL-070PAT045 (C)



Kado Fuyu (Silver)  
DL-070PAT046 (C)

# FLORAL PATTERNS

A selection of classic floral designs that will blend into any traditional interior setting.



Mason Natural  
DL-080PAT050 (B)



Mason Duckegg  
DL-080PAT051 (B)



Mason Grey  
DL-080PAT052 (B)



Baxter Biscuit  
DL-080PAT058 (B)



Baxter Ochre  
DL-080PAT056 (B)



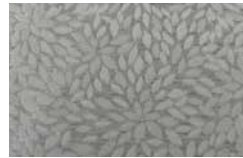
Baxter Silver  
DL-080PAT057 (B)



Hawthorne Cream  
DL-080PAT048 (B)



Hawthorne Heather  
DL-080PAT049 (B)



Hawthorne Slate  
DL-080PAT047 (B)



Hartley Duckegg  
DL-080PAT053 (B)



Hartley Linen  
DL-080PAT055 (B)



Hartley Charcoal  
DL-080PAT054 (B)

# FLORAL PATTERNS

A selection of country floral patterns which are a perfect match for country cottages.



Bilbury Heather  
DL-030PAT061 (B)



Boxgrove Teal  
DL-030PAT062 (B)



Floral Cornflower  
DL-100PAT059 (C)



Meadow Cornflower  
DL-070PAT063 (C)



Meadow Mallow  
DL-070PAT064 (C)



# COUNTRY PRINTS

These fun country animal fabrics are available in five different themes on a neutral linen fabric.



Linen Butterflies  
DL-030PAT073 (A)



Natural Hartley Hare  
DL-030PAT070 (A)



Natural Mallard  
DL-030PAT072 (A)



Natural Pheasant  
DL-030PAT069 (A)



Natural Pooch  
DL-030PAT071 (A)

# PATTERNS

We are delighted to present our new collection of patterned fabrics. There are many fabulous colours, textures and prints to choose from which are suitable for traditional or contemporary interiors.



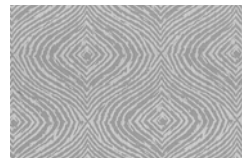
**Piazza Summer Breeze**  
DL-070PAT040 (C)



**Piazza Summer Medley**  
DL-070PAT043 (C)



**Piazza White Mist**  
DL-070PAT041 (C)



**Piazza Silent Steel**  
DL-070PAT042 (C)



**Feather Duckegg**  
DL-030PAT010 (A)



**Feather Ivory**  
DL-030PAT012 (A)



**Feather Natural**  
DL-030PAT011 (A)



**Osprey Grayling**  
DL-020PAT001 (J)



**Osprey Plume**  
DL-020PAT002 (J)



**Osprey Kelp**  
DL-020PAT003 (J)



**Erla Sage**  
DL-060PAT019 (D)



**Erla Graphite**  
DL-060PAT021 (D)



**Erla Truffle**  
DL-060PAT020 (D)



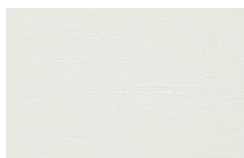
**Reflection Surf**  
DL-070PAT034 (C)



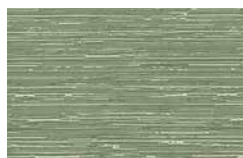
**Reflection Flan**  
DL-070PAT036 (C)



**Reflection Fog**  
DL-070PAT037 (C)



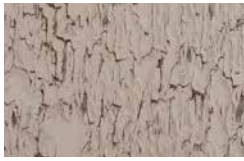
**Reflection Albin**  
DL-070PAT035 (C)



**Reflection Thyme**  
DL-070PAT038 (C)



**Reflection Sparrow**  
DL-070PAT039 (C)



Guggenheim Bronze  
DL-040PAT025 (C)



Guggenheim Chrome  
DL-040PAT026 (C)



Gherkin Sandstone  
DL-040PAT029 (C)



Gherkin Bronze  
DL-040PAT030 (C)



Taipei Ivory  
DL-040PAT027 (C)



Taipei Quartz  
DL-040PAT028 (C)



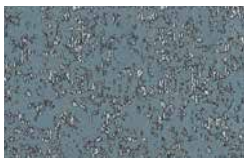
Cinnabar Ink  
DL-060PAT004 (H)



Cinnabar Slate  
DL-060PAT006 (H)



Cinnabar Truffle  
DL-060PAT005 (H)



Igneous Danube  
DL-060PAT008 (F)



Igneous Ice  
DL-060PAT007 (F)



Igneous Moonstone  
DL-060PAT009 (F)



Topaz Neutral Blush  
DL-020PAT018 (D)



Topaz Rose Quartz  
DL-020PAT016 (D)



Topaz Mink  
DL-020PAT017 (D)



Overture Thistle  
DL-040PAT022 (C)



Overture Silver  
DL-040PAT023 (C)



Overture Vanilla  
DL-040PAT024 (C)



Linear Burnt Orange  
DL-030PAT031 (A)



Linear Silver  
DL-030PAT033 (A)



Linear Antique  
DL-030PAT032 (A)



Moulin Smokey  
DL-070PAT013 (D)



Moulin Splendour  
DL-070PAT014 (D)



Moulin Emerald  
DL-070PAT015 (D)

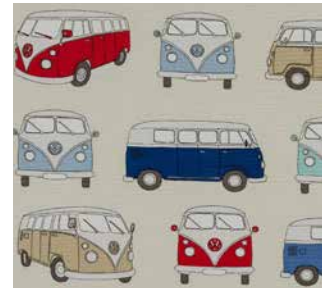


# CHILDREN'S PRINTS

We are excited to present our first dedicated collection of printed colourful fabrics suitable for children's bedrooms and playrooms.



Shoal Blue  
DL-030PAT087 (A)



VW Campervan Blue  
DL-030PAT088 (A)



Birds Multi  
DL-030PAT084 (A)



India Fuchsia  
DL-030PAT090 (A)



Ladybird Multi  
DL-030PAT089 (A)



Owls Blue  
DL-030PAT085 (A)



Owls Multi  
DL-030PAT086 (A)



Jurassic Black  
DL-080PAT101 (A)



Small Owls Multi  
DL-080PAT097 (A)





Newport Candyfloss  
DL-060PAT095 (B)



Newport Navy  
DL-060PAT093 (B)



Newport Seafoam  
DL-060PAT096 (B)



Newport Strawberry  
DL-060PAT094 (B)



Noah Rainbow  
DL-070PAT082 (C)



Noah Ocean  
DL-070PAT083 (C)



Beach Hut Multi  
DL-080PAT098 (A)



Cupcake Multi  
DL-080PAT099 (A)



Hippies Multi  
DL-080PAT100 (A)

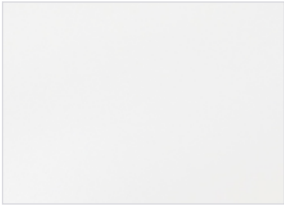


---

# 6

## CHOOSE THE LAMINATE

All laminated hard shades come with white laminate lining as standard. This allows some light to filter through the shade. Should you wish to have a metallic laminate lining in gold, silver, or champagne, this blocks out the light to the side of the shade and creates an up and down lighting effect from the top and bottom of the shade.



White  
DL/WHT LINING



Silver  
DL/SILV LINING



Gold  
DL/GOLD LINING



Champagne  
DL/CHAMP LINING

---

# 7

## CONSIDER A DIFFUSER

If you prefer not be able to see the light bulb inside an open pendant, then consider a diffuser. We have acrylic opal or self-fabric colour options.



# 8

## CONSIDER TRIMS

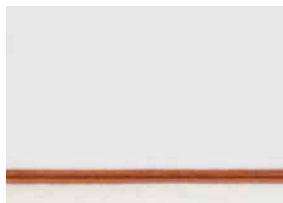
You can add a flash of colour to a plain pleated shade with a special trim. See below our standard Russia trims that are in stock, but you can specify or supply your own custom trim or ribbon. For more information contact our shade makers on [shades@elsteadlighting.com](mailto:shades@elsteadlighting.com)



Black and Gold  
DL/BLKG TRIM



Black  
DL/BLK TRIM



Gold  
DL/GOLD TRIM



Burgundy and Gold  
DL/BDYG TRIM

---

# CUSTOM SHADES

1

## RECOVER FRAME SERVICE

For those special antique lamps that have unusual shade shapes and sizes, or older fittings whose shades are tired and dirty – Elstead can offer a Recover Frame Service. Simply send in your shade with your specification of ideal shade fabric and colour choice.

2

## CUSTOM MADE FRAMES

For those projects that demand larger shades, Elstead will be developing over the coming months a service that utilises their 50 years of metalworking, to offer large bespoke manufactured frames for large homes and hospitality projects.



3

## CUSTOMER'S OWN FABRIC

When you have a specific interior design scheme that requires a specialist print or fabric, you can provide our shade makers with your own choice of material. A sample must be supplied to check suitability of fabric for shades and fabric must be supplied on a roll to prevent damage to the material.

4

## CUSTOM SHADES FOR ELSTEAD FIXTURES

Many shaded products in the Elstead Interior Collection 2019 may have customised shades made to match your soft furnishings scheme. Simply enquire with the product code from the catalogue and your ideal shade colour, so we can check possibility and cost.

SEND YOUR CUSTOM MADE  
SHADE ENQUIRIES TO  
[SHADES@ELSTEADLIGHTING.COM](mailto:SHADES@ELSTEADLIGHTING.COM)



## PORTABLES



### SABI

DL/SABI/TL

---

Base: Elephant statuette in Bronze Patina finish  
Base W: 190mm H: 270mm D: 110mm

---

Shade: 10" Laminated Oval, Hessian – Natural  
Shade W: 10"/250mm H: 180mm D: 170mm

---

Total H. with shade: 450mm

---

Max. Wattage: 1 x 60W E27



**RUFUS**  
DL/RUFUS/TL

**Base:** Dog statuette in Bronze Patina finish  
**Base W:** 260mm **H:** 285mm **D:** 110mm

**Shade:** 12" Laminated Oval, Hessian – Natural  
**Shade W:** 12"/310mm **H:** 200mm **D:** 210mm

**Total H. with shade:** 480mm

**Max. Wattage:** 1 x 60W E27

**HALKIRK**  
DL/HALKIRK/TL

**Base:** Pheasant statuette in Bronze Patina finish  
**Base W:** 295mm **H:** 330mm **D:** 110mm

**Shade:** 14" Laminated Rectangle, Hessian – Natural

**Shade W:** 14"/350mm **H:** 230mm **D:** 200mm

**Total H. with shade:** 560mm

**Max. Wattage:** 1 x 60W E27



**ECLIPSE**  
DL/ECLIPSE/TL

**Base:** Horse Bust statuette in Bronze Patina finish  
**Base W:** 165mm **H:** 380mm **D:** 145mm

**Shade:** 12" Laminated Tapered Square, Hessian – Natural

**Shade W:** 12"/300mm **H:** 280mm **D:** 300mm

**Total H. with shade:** 660mm

**Max. Wattage:** 1 x 60W E27





## ANGUS

DL/ANGUS/TL

**Base:** Large Stag statuette in Bronze Patina finish

**Base W:** 365mm **H:** 525mm **D:** 225mm

**Shade:** 18" Laminated Oval, Hessian – Natural

**Shade W:** 18"/460mm **H:** 280mm **D:** 295mm

**Total H. with shade:** 800mm

**Max. Wattage:** 1 x 60W E27



## AMELIA

DL/AMELIA/TL

**Base:** Stag and Fawn statuette in Bronze Patina finish

**Base W:** 290mm **H:** 400mm **D:** 235mm

**Shade:** 16" Laminated Oval, Hessian – Natural

**Shade W:** 16"/400mm **H:** 255mm **D:** 270mm

**Total H. with shade:** 650mm

**Max. Wattage:** 1 x 60W E27

## DORADO

DL/DORADO/TL

**Base:** Large Horse statuette in Bronze Patina finish

**Base W:** 420mm **H:** 490mm **D:** 130mm

**Shade:** 18" Laminated Rectangle, Hessian – Natural

**Shade W:** 18"/460mm **H:** 280mm **D:** 280mm

**Total H. with shade:** 770mm

**Max. Wattage:** 1 x 60W E27



## SPIRIT

DL/SPIRIT/TL

**Base:** Small Horse statuette in Bronze Patina finish

**Base W:** 330mm **H:** 410mm **D:** 130mm

**Shade:** 16" Laminated Oval, Hessian – Natural

**Shade W:** 16"/400mm **H:** 255mm **D:** 270mm

**Total H. with shade:** 655mm

**Max. Wattage:** 1 x 60W E27





**PAINSWICK LIMED  
SMALL**

DL/PW/TL S LM

**Base:** Turned Wood with Limed finish  
manufactured in England  
**Base H:** 230mm **W:** 130mm

**Shade:** choose 10" option

**Total H:** 380mm **W:** 255mm

**Max. Wattage:** 1 x 60W E27

**PAINSWICK LIMED  
MEDIUM**

DL/PW/TL M LM

**Base:** Turned Wood with Limed finish  
manufactured in England  
**Base H:** 290mm **W:** 130mm

**Shade:** choose 12" option

**Total H:** 460mm **W:** 305mm

**Max. Wattage:** 1 x 60W E27

**PAINSWICK LIMED  
LARGE**

DL/PW/TL L LM

**Base:** Turned Wood with Limed finish  
manufactured in England  
**Base H:** 340mm **W:** 140mm

**Shade:** choose 14" option

**Total H:** 540mm **W:** 360mm

**Max. Wattage:** 1 x 60W E27



These models are available with the following fabrics:



Hessian Natural

10" - DL/LSE10/H NATRL

12" - DL/LSE12/H NATRL

14" - DL/LSE14/H NATRL



Hare theme

10" - DL/LSE10/HARE

12" - DL/LSE12/HARE

14" - DL/LSE14/HARE



Dog theme

10" - DL/LSE10/DOG

12" - DL/LSE12/DOG

14" - DL/LSE14/DOG



Pheasant theme

10" - DL/LSE10/PHEAS

12" - DL/LSE12/PHEAS

14" - DL/LSE14/PHEAS





**PAINSWICK WALNUT  
LARGE**

DL/PW/TL L WL

**Base:** Turned Wood with Walnut finish  
manufactured in England  
**Base H:** 340mm **W:** 140mm

**Shade:** choose 14" option

**Total H:** 540mm **W:** 360mm

**Max. Wattage:** 1 x 60W E27

**PAINSWICK WALNUT  
MEDIUM**

DL/PW/TL M WL

**Base:** Turned Wood with Walnut finish  
manufactured in England  
**Base H:** 290mm **W:** 130mm

**Shade:** choose 12" option

**Total H:** 460mm **W:** 305mm

**Max. Wattage:** 1 x 60W E27

**PAINSWICK WALNUT  
SMALL**

DL/PW/TL S WL

**Base:** Turned Wood with Walnut finish  
manufactured in England  
**Base H:** 230mm **W:** 130mm

**Shade:** choose 10" option

**Total H:** 380mm **W:** 255mm

**Max. Wattage:** 1 x 60W E27



**Butterfly theme**

10" - DL/LSE10/BFLY

12" - DL/LSE12/BFLY

14" - DL/LSE14/BFLY

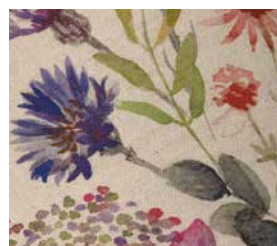


**Duck theme**

10" - DL/LSE10/DUCK

12" - DL/LSE12/DUCK

14" - DL/LSE14/DUCK



**Botanic theme**

10" - DL/LSE10/BOTANIC

12" - DL/LSE12/BOTANIC

14" - DL/LSE14/BOTANIC



### WOODSTOCK LIMED SMALL

DL/WS/TL S LM

**Base:** Turned Wood with Limed finish  
manufactured in England  
**Base H:** 255mm **W:** 145mm

**Shade:** choose 10" option

**Total H:** 415mm **W:** 255mm

**Max. Wattage:** 1 x 60W E27

### WOODSTOCK LIMED MEDIUM

DL/WS/TL M LM

**Base:** Turned Wood with Limed finish  
manufactured in England  
**Base H:** 300mm **W:** 145mm

**Shade:** choose 12" option

**Total H:** 480mm **W:** 305mm

**Max. Wattage:** 1 x 60W E27

### WOODSTOCK LIMED LARGE

DL/WS/TL L LM

**Base:** Turned Wood with Limed finish  
manufactured in England  
**Base H:** 360mm **W:** 160mm

**Shade:** choose 14" option

**Total H:** 570mm **W:** 360mm

**Max. Wattage:** 1 x 60W E27



These models are available with the following fabrics:



Hessian Natural

10" - DL/LSE10/H NATRL

12" - DL/LSE12/H NATRL

14" - DL/LSE14/H NATRL



Hare theme

10" - DL/LSE10/HARE

12" - DL/LSE12/HARE

14" - DL/LSE14/HARE



Dog theme

10" - DL/LSE10/DOG

12" - DL/LSE12/DOG

14" - DL/LSE14/DOG



Pheasant theme

10" - DL/LSE10/PHEAS

12" - DL/LSE12/PHEAS

14" - DL/LSE14/PHEAS



**WOODSTOCK WALNUT  
LARGE**

DLWS/TL L WL

**Base:** Turned Wood with Walnut finish  
manufactured in England  
**Base H:** 360mm **W:** 160mm

**Shade:** choose 14" option

**Total H:** 570mm **W:** 360mm

**Max. Wattage:** 1 x 60W E27

**WOODSTOCK WALNUT  
MEDIUM**

DLWS/TL M WL

**Base:** Turned Wood with Walnut finish  
manufactured in England  
**Base H:** 300mm **W:** 145mm

**Shade:** choose 12" option

**Total H:** 480mm **W:** 305mm

**Max. Wattage:** 1 x 60W E27

**WOODSTOCK WALNUT  
SMALL**

DLWS/TL S WL

**Base:** Turned Wood with Walnut finish  
manufactured in England  
**Base H:** 255mm **W:** 145mm

**Shade:** choose 10" option

**Total H:** 415mm **W:** 255mm

**Max. Wattage:** 1 x 60W E27



**Butterfly theme**

10" - DL/LSE10/BFLY

12" - DL/LSE12/BFLY

14" - DL/LSE14/BFLY



**Duck theme**

10" - DL/LSE10/DUCK

12" - DL/LSE12/DUCK

14" - DL/LSE14/DUCK



**Botanic theme**

10" - DL/LSE10/BOTANIC

12" - DL/LSE12/BOTANIC

14" - DL/LSE14/BOTANIC



## LOUVIERS

DL/LOUVIERS/TL

**Base:** Ox Blood wood column with gold painted accents

**Base W:** 135mm **H:** 550mm

**Shade:** 18" Soft Tall Empire with Box Pleats, Ivory 100% cotton with black and gold trim. 7" shade carrier

**Shade: W:** 18"/465mm **H:** 310mm

**Total H. with shade:** 830mm

**Max. Wattage:** 1 x 60W E27



## PERONNE

DL/PERONNE/TL

**Base:** Black wood column with gold painted accents

**Base W:** 135mm **H:** 550mm

**Shade:** 18" Soft Tall Empire with Box Pleats, Ivory 100% cotton with black and gold trim. 7" shade carrier

**Shade: W:** 18"/465mm **H:** 310mm

**Total H. with shade:** 830mm

**Max. Wattage:** 1 x 60W E27

## NARBONNE

DL/NARBONNE/TL

**Base:** Black wood urn with gold painted leaves  
**Base W:** 155mm **H:** 425mm

**Shade:** 18" Soft Tall Empire with Box Pleats, Ivory 100% cotton with black and gold trim. 7" shade carrier

**Shade: W:** 18"/465mm **H:** 310mm

**Total H. with shade:** 710mm

**Max. Wattage:** 1 x 60W E27



## STRASBOURG

DL/STRASBOURG/TL

**Base:** Black decorated wood column with gold painted accents

**Base W:** 150mm **H:** 545mm

**Shade:** 18" Soft Tall Empire with Box Pleats, Ivory 100% cotton with black and gold trim. 7" shade carrier

**Shade: W:** 18"/465mm **H:** 310mm

**Total H. with shade:** 820mm

**Max. Wattage:** 1 x 60W E27





## DIAN

DL/DIAN/TL

---

**Base:** Silver with Flower and Leaves Decor, oriental ceramic vase

**Base W:** 190mm **H:** 440mm

---

**Shade:** 18" Soft Tall Empire with Box Pleats, Ivory 100% cotton with black and gold trim. 7" shade carrier

**Shade: W:** 18"/460mm **H:** 310mm

---

**Total H. with shade:** 720mm

---

**Max. Wattage:** 1 x 60W E27



## LINYI

DL/LINYI/TL

---

**Base:** Blue and White oriental ceramic

**Base W:** 190mm **H:** 285mm

---

**Shade:** 14" Soft Tall Empire with Box Pleats, Ivory 100% cotton. 5" shade carrier

**Shade: W:** 14"/350mm **H:** 250mm

---

**Total H. with shade:** 500mm

---

**Max. Wattage:** 1 x 60W E27



## HARBIN GOURD DUCK EGG BLUE

DL/HARBIN/TL DEB

**Base:** Duck Egg Blue gourd shaped oriental ceramic

**Base W:** 200mm **H:** 430mm

**Shade:** 18" Laminated Tall Empire, Off-White Polycotton.

**Shade W:** 18"/460mm **H:** 280mm

**Total H. with shade:** 680mm

**Max. Wattage:** 1 x 60W E27

## HARBIN GOURD OXBLOOD

DL/HARBIN/TL OXB

**Base:** Ox Blood gourd shaped oriental ceramic

**Base W:** 200mm **H:** 430mm

**Shade:** 18" Laminated Tall Empire, Off-White Polycotton.

**Shade W:** 18"/460mm **H:** 280mm

**Total H. with shade:** 680mm

**Max. Wattage:** 1 x 60W E27



## HARBIN GOURD CELADON

DL/HARBIN/TL CEL

**Base:** Celadon gourd shaped oriental ceramic

**Base W:** 200mm **H:** 430mm

**Shade:** 18" Laminated Tall Empire, Off-White Polycotton.

**Shade W:** 18"/460mm **H:** 280mm

**Total H. with shade:** 680mm

**Max. Wattage:** 1 x 60W E27





## MAJIN OXBLOOD

DL/MAJIN/TL OXB

---

**Base:** Ox Blood traditional vase, oriental ceramic  
**Base W:** 145mm **H:** 370mm

**Shade:** 16" Laminated Tall Empire, Cream  
Polycotton with burgundy/gold trim.

**Shade W:** 16"/400mm **H:** 260mm

---

**Total H. with shade:** 610mm

---

**Max. Wattage:** 1 x 60W E27



## OXBLOOD TEMPLE JAR

DL/OXBLOOD TJ/TL

---

**Base:** Ox Blood temple jar, oriental ceramic  
**Base W:** 165mm **H:** 400mm

**Shade:** 18" Laminated Tall Empire, Off-White  
Polycotton with ivory and Gold trim.

**Shade W:** 18"/460mm **H:** 280mm

---

**Total H. with shade:** 655mm

---

**Max. Wattage:** 1 x 60W E27



## TAIPEI

DL/TAIPEI/TL

**Base:** Black with gold and brown décor on traditional vase, oriental ceramic

**Base W:** 165mm **H:** 400mm

**Shade:** 16" Soft Tall Empire with Box Pleats, Ivory 100% Cotton with black and gold trim. 7" shade carrier

**Shade: W:** 16"/400mm **H:** 280mm

**Total H. with shade:** 680mm

**Max. Wattage:** 1 x 60W E27



## SASHI

DL/SASHI/TL

**Base:** Green with gold and brown décor on traditional vase, oriental ceramic

**Base W:** 165mm **H:** 400mm

**Shade:** 16" Soft Tall Empire with Box Pleats, Ivory 100% cotton with black and gold trim. 7" shade carrier

**Shade: W:** 16"/400mm **H:** 280mm

**Total H. with shade:** 680mm

**Max. Wattage:** 1 x 60W E27





## CHILING BLACK

DL/CHILING/TL B

---

**Base:** Black large temple jar, oriental ceramic  
**Base W:** 220mm **H:** 490mm

---

**Shade:** 20" Soft Tall Empire with Box Pleats, Ivory 100% cotton with black and gold trim. 8" shade carrier

**Shade: W:** 20"/510mm **H:** 330mm

---

**Total H. with shade:** 810mm

---

**Max. Wattage:** 1 x 60W E27



## TONGLING CREAM

DL/TONGLING/TL C

---

**Base:** Cream large temple jar, oriental ceramic  
**Base W:** 220mm **H:** 540mm

---

**Shade:** 20" Soft Tall Empire with Box Pleats, Ivory 100% cotton with Ivory trim. 8" shade carrier

**Shade: W:** 20"/510mm **H:** 330mm

---

**Total H. with shade:** 860mm

---

**Max. Wattage:** 1 x 60W E27

## YANTAI CELADON

DL/YANTAI/TL CEL

**Base:** Celadon large temple jar, oriental ceramic  
**Base W:** 230mm **H:** 500mm

**Shade:** 20" Soft Tall Empire with Box Pleats, Ivory  
100% cotton with ivory trim. 8" shade carrier  
**Shade: W:** 20"/510mm **H:** 330mm

**Total H. with shade:** 810mm

**Max. Wattage:** 1 x 60W E27



## DALIAN CELADON

DL/DALIAN/TL CEL

**Base:** Celadon large traditional vase, oriental ceramic

**Base W:** 230mm **H:** 550mm

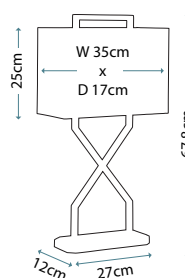
**Shade:** 20" Soft Tall Empire with Box Pleats, Ivory  
100% cotton with ivory trim. 8" shade carrier

**Shade: W:** 20"/510mm **H:** 330mm

**Total H. with shade:** 870mm

**Max. Wattage:** 1 x 60W E27





**CROSS**  
CROSS/TL

Polished Gold metal base complete with a Navy Blue oblong shade that has a Metallic Gold lining.

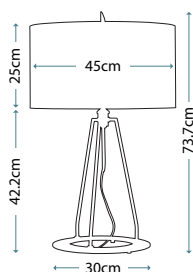
Max. Wattage: 1 x 60W E27

## FERRARA GREY

FERRARA/TL GPG

Dark Grey legs ascend from a Polished Gold base on hidden feet so the ring appears to hover above the table, complete with a Grey polycotton cylinder shade that has a Metallic Gold lining.

Max. Wattage: 1 x 60W E27

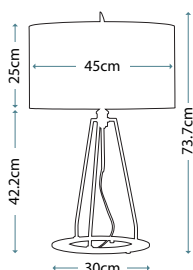


## FERRARA WHITE

FERRARA/TL WPG

White legs ascend from a Polished Gold base on hidden feet so the ring appears to hover above the table, complete with a White polycotton cylinder shade that has a Metallic Gold lining.

Max. Wattage: 1 x 60W E27



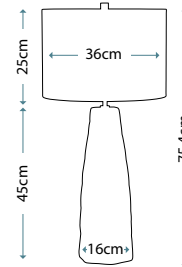


## VAUXHALL

VAUXHALL/TL

A geometric shaped vase in a Vintage Caramel finish. Completed with a Cream faux linen cylinder shade and Polished Nickel finial.

Max. Wattage: 1 x 60W E27

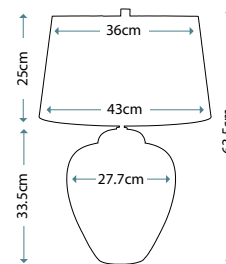


## OAKLEIGH PARK

OAKLEIGH PARK/TL

This Green/Brown textured ceramic vase has a reactive glaze finish. Completed with a Brown polycotton tapered cylinder shade with a Metallic Gold card lining and Aged Brass finial.

Max. Wattage: 1 x 60W E27

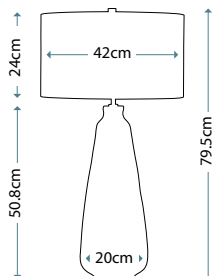


## KEW

KEW/TL

A Sage Green ceramic base sculpted into a botanical form. Completed with a White faux silk cylinder shade and Polished Nickel finial.

Max. Wattage: 1 x 60W E27

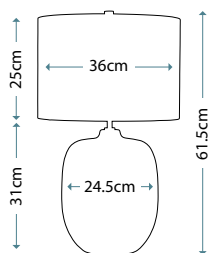


## CHALK FARM

CHALK FARM/TL

A Light Grey ceramic vase that fades to Chalk White at the base. Completed with an Ivory faux silk drum shade and Polished Nickel finial.

Max. Wattage: 1 x 60W E27





# BATHROOM LIGHTING

## BALDWIN, BENNETT & PIPPIN

These three beautiful bathroom fittings take traditional and vintage inspiration. The Pippin has a backplate with classic lines, nicely framing a White Sugar glass shade. The Baldwin uses a precision die-cast backplate and tapered square etched opal glass shade, and the Bennett has petite arched arms and latches, with pressed prismatic glass.

IP44 LED

**FEISS**  
EST. 1955



PIPPIN  
FE/PIPPIN1

**HINKLEY**  
LIGHTING



BENNETT  
HK/BENNETT1 BATH



BALDWIN  
HK/BALDWIN1 BATH

Code	Description	Height	Width	Projection	Finish	Max. Wattage
HK/BALDWIN1 BATH	1lt Wall Light	205mm	115mm	137mm	Polished Chrome	1 x 3.5W LED G9*
HK/BENNETT1 BATH	1lt Wall Light	225mm	130mm	173mm	Polished Chrome	1 x 3.5W G9 LED*
FE/PIPPIN1	1lt Wall Light	381mm	152mm	116mm	Polished Chrome	1 x 3.5W LED G9*

\* Each supplied LED G9 bulb = 320Lm, 3000k



Blythe sparkles with an air of refinement and elegance. Faceted crystal finials are precisely placed, subtly accenting each angle to enhance its chic, transitional style. Tessa's dynamic details exude quality. The precision die-cast back plate, arm and cup combine with a sturdy cross bar to balance its square etched opal glass shades.



**BLYTHE**  
HK/BLYTHE3 BATH



**BLYTHE**  
HK/BLYTHE1 BATH



**TESSA**  
HK/TESSA1 BATH



**TESSA**  
HK/TESSA3 BATH

Code	Description	Height	Width	Projection	Finish	Max. Wattage
HK/BLYTHE1 BATH	1lt Wall Light	223mm	130mm	163mm	Polished Chrome	1 x 3.5W LED G9*
HK/BLYTHE3 BATH	3lt Bar Light	223mm	632mm	138mm	Polished Chrome	3 x 3.5W LED G9*
HK/TESSA1 BATH	1lt Wall Light	194mm	146mm	144mm	Polished Chrome	1 x 3.5W LED G9*
HK/TESSA3 BATH	3lt Bar Light	194mm	559mm	164mm	Polished Chrome	3 x 3.5W LED G9*

\* Supplied with 3.5W LED G9 bulb(s) = 320Lm each, 3000k

*EXTERIOR RANGES*



With a soft, updated approach to the Prairie design style, the Hodges outdoor collection by Feiss has a simple yet refined farmhouse look. Great craftsmanship and technique is applied to bend the metal roofline and to create the loop at the crown. An Ash Black finish combined with Clear Seeded glass panels provides a warm welcome. Constructed of a weather resistant composite material for added strength, durability and longevity, the collection offers a 5-year warranty.

**HODGES**



FE/HODGES/L



FE/HODGES/S

Code	Description	Height	Width	Projection	Finish	Max. Wattage	IP Rating
FE/HODGES/S	Small Wall Lantern	300mm	196mm	180mm	Ash Black	1 x 60W E27	IP44
FE/HODGES/L	Large Wall Lantern	415mm	272mm	194mm	Ash Black	1 x 60W E27	IP44



Models shown: FE/BOYNTON2/L

Taking inspiration from both industrial and nautical design and boasting a new Painted Brushed Steel finish, the Boynton outdoor collection by Feiss makes a style statement that is equally suited for use indoors or out. Constructed of a weather resistant composite material for added strength, durability and longevity, the collection offers a 5-year warranty.



FE/BOYNTON8/S



FE/BOYNTON2/L



FE/BOYNTON2/S



FE/BOYNTON2/M

Code	Description	Height	Width	Min. Drop	Max. Drop	Projection	Finish	Max. Wattage	IP Rating
FE/BOYNTON2/S	Small Wall Lantern	273mm	229mm	-	-	271mm	Painted Brushed Steel	1 x 60W E27	IP44
FE/BOYNTON2/M	Medium Wall Lantern	328mm	267mm	-	-	311mm	Painted Brushed Steel	1 x 60W E27	IP44
FE/BOYNTON2/L	Large Wall Lantern	390mm	316mm	-	-	365mm	Painted Brushed Steel	1 x 60W E27	IP44
FE/BOYNTON8/S	Outdoor Pendant	279mm	229mm	500mm	1414mm*	-	Painted Brushed Steel	1 x 60W E27	IP44

\* Supplied with 3 x 305mm & 1 x 152mm rods.

# RIVERWOOD

Riverwood's modern take on a vintage-style lantern gives outdoor spaces a rustic seaside vibe. Bringing together touches of nautical style and industrial charm.

**KICHLER**

**3 YEAR\***  
GUARANTEE



KL/RIVERWOOD2/XL

Code	Description	Height	Width	Projection	Finish	Max. Wattage	IP Rating
KL/RIVERWOOD2/XL	XL Wall Lantern	497mm	279mm	309mm	Weathered Zinc	1 x 100W E27	IP44

3 YEAR\*  
GUARANTEE



KL/RIVERWOOD8/M



KL/RIVERWOOD2/L



KL/RIVERWOOD2/M



KL/RIVERWOOD2/S



KL/RIVERWOOD3/M

Code	Description	Height	Width	Min. Drop	Max. Drop	Projection	Finish	Max. Wattage	IP Rating
KL/RIVERWOOD2/S	Small Wall Lantern	317mm	172mm	-	-	194mm	Weathered Zinc	1 x 60W E27*1	IP44
KL/RIVERWOOD2/M	Medium Wall Lantern	362mm	203mm	-	-	225mm	Weathered Zinc	1 x 100W E27	IP44
KL/RIVERWOOD2/L	Large Wall Lantern	429mm	241mm	-	-	267mm	Weathered Zinc	1 x 100W E27	IP44
KL/RIVERWOOD3/M	Pedestal	440mm	203mm	-	-	-	Weathered Zinc	1 x 100W E27	IP44
KL/RIVERWOOD8/M	Chain Lantern	301mm	203mm	400mm	1980mm*2	-	Weathered Zinc	1 x 100W E27	IP44

\*1Golf ball size lamp only. \*2 Supplied with 1620mm of chain.

# TANGIER

With a classic lantern look, the Tangier collection picks up style cues from lighting found in historic town squares. The versatile outdoor design features a criss-cross pattern and traditional detailing that's always in style.

**KICHLER**

**3 YEAR\***  
GUARANTEE



KL/TANGIER2/L



KL/TANGIER2/M



KL/TANGIER8/M



KL/TANGIER2/S



KL/TANGIER3/M

Code	Description	Height	Width	Min. Drop	Max. Drop	Projection	Finish	Max. Wattage	IP Rating
KL/TANGIER2/S	Small Wall Lantern	265mm	146mm	-	-	169mm	Olde Bronze	1 x 60W E27	IP44
KL/TANGIER2/M	Medium Wall Lantern	343mm	191mm	-	-	217mm	Olde Bronze	1 x 60W E27	IP44
KL/TANGIER2/L	Large Wall Lantern	432mm	242mm	-	-	267mm	Olde Bronze	1 x 60W E27	IP44
KL/TANGIER3/M	Medium Pedestal	457mm	191mm	-	-	-	Olde Bronze	1 x 60W E27	IP44
KL/TANGIER8/M	Medium Chain Lantern	365mm	191mm	447mm	2040mm*	-	Olde Bronze	1 x 60W E27	IP44

\* Supplied with 1620mm of chain.



The Lyndon collection combines a simple streamline design with an emphasis on traditional details. Offered in a beautiful Brushed Aluminium finish with clear seeded glass, these fixtures can effortlessly blend with your existing décor.



KL/LYNDON8/S BA



KL/LYNDON2/S BA



KL/LYNDON2/M BA

Available to the full market in Architectural Bronze:



KL/LYNDON 5P



KL/LYNDON2/M



KL/LYNDON2/S



KL/LYNDON8/S

Code	Description	Height	Width	Min. Drop	Max. Drop	Projection	Finish	Max. Wattage	IP Rating
KL/LYNDON2/M BA	Medium Wall Lantern	381mm	153mm	-	-	204mm	Brushed Aluminum	1 x 100W E27	IP44
KL/LYNDON2/S BA	Small Wall Lantern	288mm	128mm	-	-	191mm	Brushed Aluminum	1 x 75W E27	IP44
KL/LYNDON8/S BA	Small Chain Lantern	246mm	128mm	330mm	1327mm*	-	Brushed Aluminum	1 x 75W E27	IP44

\* Supplied with 965mm of chain.

# RAVINE

The Ravine outdoor collection achieves sophisticated style in a minimal way. The rich Western Bronze on the base showcases the clear bevelled glass panels on the sides and top of the fixture.

# QUOIZEL

**2 YEAR\***  
GUARANTEE



QZ/RAVINE2/L

Code	Description	Height	Width	Projection	Finish	Max. Wattage	IP Rating
QZ/RAVINE2/L	Large Wall Lantern	508mm	254mm	292mm	Western Bronze	1 x 100W E27	IP44

# QUOIZEL

2 YEAR\*  
GUARANTEE



QZ/RAVINE8/L



QZ/RAVINE8/M



QZ/RAVINE2/S



QZ/RAVINE2/M



QZ/RAVINE3/M

Code	Description	Height	Width	Min. Drop	Max. Drop	Projection	Finish	Max. Wattage	IP Rating
QZ/RAVINE2/S	Small Wall Lantern	318mm	152mm	-	-	184mm	Western Bronze	1 x 100W E27	IP44
QZ/RAVINE2/M	Medium Wall Lantern	413mm	203mm	-	-	235mm	Western Bronze	1 x 100W E27	IP44
QZ/RAVINE8/M	Medium Chain Lantern	413mm	203mm	475mm	2791mm*	-	Western Bronze	1 x 100W E27	IP44
QZ/RAVINE3/M	Medium Pedestal	510mm	203mm	-	-	-	Western Bronze	1 x 100W E27	IP44
QZ/RAVINE8/L	Large Chain Lantern	508mm	254mm	570mm	3006mm*	-	Western Bronze	1 x 100W E27	IP44

\* Supplied with 2438mm of chain.

UK HEAD OFFICE

Elstead Lighting Ltd.  
Elstead House, Mill Lane, Alton,  
Hampshire, GU34 2QJ, UK

UK SALES

T: 01420 82377  
F: 01420 89261  
E: enquiries@elsteadlighting.com

SHADE SALES

T: 01420 82377  
F: 01420 89261  
E: shades@elsteadlighting.com

EXPORT SALES

T: +44 (0) 1420 590509  
F: +44 (0) 1420 590005  
E: export@elsteadlighting.com

ELSTEAD EUROPEAN OFFICE

Elstead Lighting Sp. z o.o.  
ul. Sportowa 12  
32-083 Balice, Poland

T: +48 124441091  
F: +48 124441966  
E: biuro@elstead-lighting.pl

ELSTEAD SLOVAKIA

Elstead Lighting, S. R. O.  
Villa Hungaria, Razusova 9  
Piestany, 92101, Slovakia  
T: +421 (0) 940 853483  
E: sales@elsteadlighting.sk

 *Designer's*  
LIGHT BOX™ 

BY  **Elstead**  
LIGHTING